

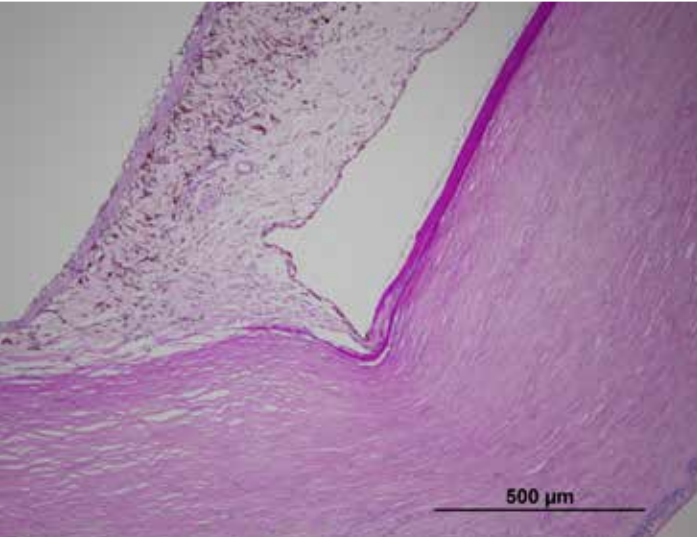
Servicing Veterinary Clients

Interpreting:

- Eyelid lesions
- Periocular and orbital lesions
- Exenterations
- Eviscerations
- Enucleations

Home to WCVM's Ocular Mystery Slide sessions. A key element in monthly education of international ophthalmology residents.

Research and collaborative investigative opportunities from a comprehensive ocular data set.



PDS

**Prairie Diagnostic
Services Inc.**

52 Campus Drive
Saskatoon, SK S7N
5B4 Canada

Tel: 306-966-7316

Email: pds.info@usask.ca

www.pdsinc.ca

Prairie Ocular Pathology Service

COMPREHENSIVE DIAGNOSTIC REPORTS

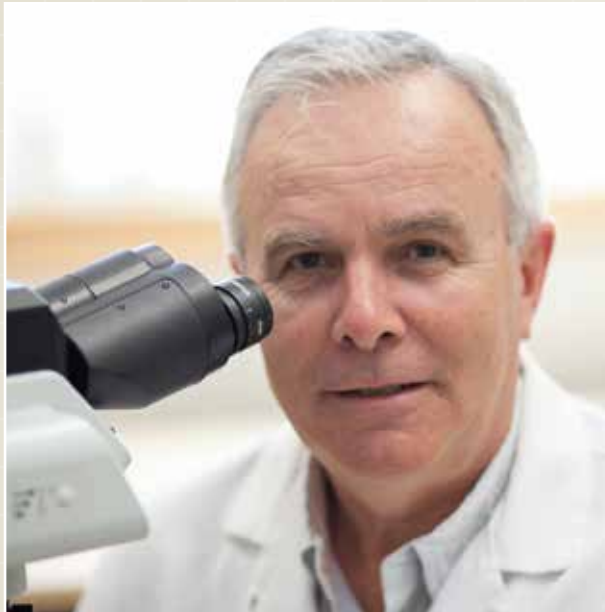
- Web based services
- On-line submissions forms
- Real time on-line reporting through Web Client Portal
- Digital images available on-line through Web Client Portal



Ocular pathology service supported by multiple subspecialists on the cutting edge of technology within the WCVM Centre of Excellence.

ACVO & ACVP TRAINED VETERINARIANS:

- Trained in the proper handling of ocular tissues and ocular histopathology
- Understand the importance of clinically relevant interpretation



Digital Report elements include:

- Gross and histological imaging
- ACVO & ACVP interpretations
- PAS staining included Expert
- interpretive assistance

EXPERTISE YOU CAN RELY ON

- 50+ years of technical histological expertise generating superior slide quality
- Digital imaging of gross pathology and histological images included in report
- Specialized handling of ocular tissue throughout laboratory process
- Fully equipped, modern histology laboratory
- PAS & HE staining on all enucleation specimens, with access to 40+ additional histochemical stains.



Specialized service providing interpretations from a team of veterinary ophthalmologists and (ACVO) pathologists (ACVP)

Preferred fixative for POPS submissions is Davidson's Fixative.